

HRXD Quick Installation Guide

Step 1: Connect Cameras, Peripherals

Connect up to 16 cameras, depending on your DVR model.

Note Use the SVHS input for your main monitor, if possible. It will give you better quality video display.

Note You cannot mix NTSC and PAL equipment. For example, you cannot use a PAL camera and an NTSC monitor.

RS485 Connector Pin Outs	
Master Unit	Slave Unit
+ To TX+	
- To TX-	
+ To RX+	
- To RX-	

I/O Connector Pin Outs	
AI (1 to 16)	Alarm Inputs 1 to 16
GND	Chassis Ground (9 connectors)
AO (1 to 16)	Alarm Outputs 1 to 16
ARI	Alarm Reset In

Set Event Alarm Settings

- Event Menu > Alarm-In Settings.** Set up each alarm input from the terminal strip on the back of the DVR.
- Activate each input being used and give it a Title.** Set each input as either normally open (NO) or normally closed (NC).
- Event Menu > Alarm-In > Actions 1.** Highlight **Actions 1** to open the Actions 1 setup screen. Set the actions the DVR will take when it senses an input in the **Alarm-Out** column. Also select which cameras the DVR should record when an alarm is present.
- Event Menu > Alarm-In > Actions 1 > Notify.** Select the **Notify** field for an alarm input to set who will be notified when the alarm is detected.
- Event Menu > Alarm-In > Actions 2.** Highlight **Actions 2** to open the Actions 2 setup screen. On this screen, select the PTZ presets to run and spot monitors to display when an alarm is present.

Step 2: Configure the DVR

Settings Overview

- Connect the power cord to the unit. It takes approximately 60 seconds to power up.
- Throughout the screens you will see **←**. Highlighting **←** and pressing **←** will reset the screen to its default settings.
- Press **MENU** on the front panel to enter the setup screens. Select a User and enter the password by pressing the camera number buttons and then **←**. There is no default password when logging in the **admin** user for the first time.
- Highlight **Information** and press **←**. From the Information screen you can set the DVR language and upgrade the software.
- Highlight **Date/Time** in the System menu and press **←** to set the date and time. Select the appropriate DST option.
- To add, edit and delete users and groups of users, highlight **User** in the System menu and press **←** (see **New User Setup** for details).
- To set up your Network connection and other network options, highlight **Network** in the Network menu and press **←**.
- Highlight Camera in the Devices menu and press **←** to set up your cameras and PTZ domes.
- Highlight **Alarm-Out** in the Devices menu and press **←** to change the settings and establish a schedule for each alarm output device used.
- Highlight **Display** and press **←** to select what information to display on the main monitor (for example, date, time and camera number).
- To set up your recording options, use the screens in the Record menu. Here you will find general recording settings along with schedules, pre-event and archive options.
- Set up your Event options in the Event menu:
 - Select **Alarm-In** and press **←** to set up your Alarm Inputs.
 - Highlight **Motion Detection** and press **←** to change your motion detections settings.
 - Select **Video Loss** to set up Video Loss event options.
 - Highlight **Text-In** and press **←** to set up your Text event options.
 - Highlight **Event Status** and press **←** to check the current event status of the DVR.

Edit Text/Screen Titles and Numerical Values

- Select the line, then press **←**.
- If the field is numerical, use the cursor controls or inner jog wheel to adjust the value.
- If the field is a text line, use the Text Entry screen to edit the text. Press **←** to confirm the entry and select **OK** to confirm entered text.

General Recording Settings

- Record Menu > Record.** Make sure **Recycle** is checked. Select your **Resolution**, **Event Record Dwell** time and **Auto Deletion** option. If you are using **Panic Recording**, set those options as needed.
- Record Menu > Schedule.** Make sure **Schedule On** is checked to program the DVR to record based on time, day of the week, and holidays. Select + to add a schedule item. For each new schedule item you will need to set the day and time range, recording mode and channels to be recorded.
- Record Menu > Schedule > Settings.** For each new schedule item, select **Settings** and press **←**. You can set the images per second and Quality of the recording for any modes you set in the Mode column.

Set Motion Detection Settings

- Event Menu > Motion Detection Settings.** From this screen, video motion detection can be turned on or off for each camera.
- Event Menu > Motion Detection > Sensitivity.** Adjust the DVR's sensitivity to motion for Daytime and Nighttime independently (set from 1, low, to 5, high).
- Event Menu > Motion Detection > Min. Blocks.** Adjust the minimum number of detection blocks for Daytime or Nighttime independently. Smaller numbers of Minimum Blocks provide greater sensitivity.
- Event Menu > Motion Detection > Zone Screen.** You can define the area of the image where you want to detect motion (a doorway, for example). Highlight the box under **Zone** and press **←**. The Zone screen is laid over the video for the selected camera. Set up the motion detection zones by selecting and clearing blocks.
- Event Menu > Motion Detection > Actions 1.** From this screen, the DVR can be set to react differently to each motion detection. You can associate multiple cameras with the motion detecting camera, recording video from all the associated cameras when motion is detected. In the **Alarm-Out** field you can select which alarm outputs will be triggered when motion is detected. You can also select which devices or users will be notified when motion is detected.
- Event Menu > Motion Detection > Actions 2.** From this screen, the DVR can be set to react differently to each motion detection. You can select a PTZ preset position for each PTZ camera to move to when motion is detected. In the **Spot Monitor** field you can associate a different camera with each spot monitor, so that specific cameras will be displayed on the spot monitors when motion is detected.

Step 3: Daily Operation

Password

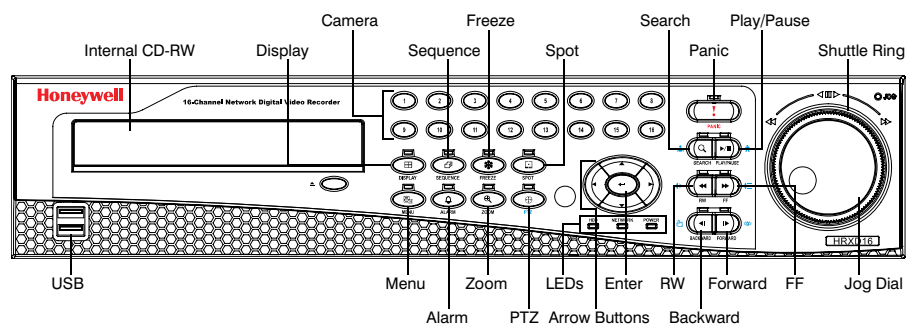
Select a User and enter the password by pressing the appropriate combination of Camera number buttons and then **←**. There is no default password when logging in as the **admin** user for the first time.

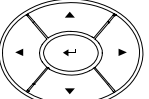
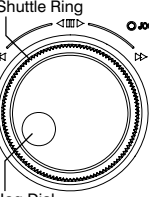
Note To assure the secure management of the system, setting up a password is strongly recommended.

New User Setup

- System Menu > User.** To set up your users and user groups, select **User** in the System menu. Delete Users or Groups by selecting the corresponding **X** and pressing **←**. Highlight a User Name and press **←** to add or change the password assigned to that User. You can also change the User's group.
- System Menu > User > New User.** Select **+ User...** on the User setup screen and press **←**. Use the virtual keyboard to enter the new User Name. Assign the User to a Group and enter a password with the camera buttons.
- System Menu > User > New Group.** Select **+ Group...** on the User setup screen and press **←**. Use the virtual keyboard to enter the new Group Name. Assign the Authority level for the group by selecting the appropriate Authority boxes.

Front Panel Navigation Controls



Control	Description
Camera buttons (1 to 16)	<ul style="list-style-type: none"> Cause selected camera to display full screen. Buttons 1 to 9 are used to enter passwords.
DISPLAY Button	<ul style="list-style-type: none"> Toggles between different display formats. Press and hold for 5 seconds to switch from Video Out and VGA out.
SPOT Button	<ul style="list-style-type: none"> Press to select which cameras will display on the four spot monitors. Select the spot monitor and choose to show either one camera or all cameras sequentially.
MENU Button	<ul style="list-style-type: none"> Enters the Setup screen and closes the current screen/menu. Displays the Search menu when in Playback mode. In Search mode, press and hold for 2 seconds to start Clip-copying.
ALARM Button	<ul style="list-style-type: none"> Reset the DVR's outputs, including the internal buzzer, during an alarm. In live monitoring mode, display the event log unless an alarm is active.
ZOOM Button	<ul style="list-style-type: none"> Zooms in the current image, and opens a PIP showing the zoomed area.
	<ul style="list-style-type: none"> Navigate through menus and GUI. Change numbers by highlighting the number (left/right) and increase/decrease the value (up/down). Control Pan and Tilt in PTZ mode. Move the PIP display on the screen and cycle through screen pages.
PANIC Button	<ul style="list-style-type: none"> Starts panic recording of all cameras. Press again to stop recording.
Enter Button	<ul style="list-style-type: none"> Press ↵ to select a highlighted item, or complete an entry made during system setup.
SEARCH Button	<ul style="list-style-type: none"> Enters the Search menu. Press again to exit the Search menu. Zooms in while in PTZ mode.
RW Button	<ul style="list-style-type: none"> Plays video backward at high speed. Press RW multiple times to toggle between the 3 available rewind speeds.
FF Button	<ul style="list-style-type: none"> Plays video forward at high speed. Press FF multiple times to toggle between the 3 available fast forward speeds.
FORWARD Button	<ul style="list-style-type: none"> In Playback mode, press to go forward to the next image.
BACKWARD Button	<ul style="list-style-type: none"> In Playback mode, press to go backward to the previous image.
PLAY/PAUSE Button	<ul style="list-style-type: none"> Play back images at regular speed. While in Playback mode, this button will pause the video. Zooms out while in PTZ mode.
	<p>The shuttle ring and jog dial are part of the same control. The shuttle ring is the outermost ring. The jog dial is the inner wheel.</p> <ul style="list-style-type: none"> The Shuttle Ring only functions in Playback mode. The shuttle ring is spring loaded and returns to the center when released. Turn the ring clockwise to play video forwards, counterclockwise to play video backwards. Playback speeds vary with the amount the ring is turned. In Playback mode the Jog Dial plays video forward and backward image by image. In Setup mode, highlight a numerical item and use the jog dial to increase or decrease the number.

Live Monitoring

The HRXD recorder continues recording while archiving, during playback and when transmitting to remote sites. This allows you to view recorded video while the DVR continues recording. When in Live mode, pressing **SEQUENCE** will display all live channels sequentially.

Playback

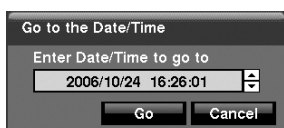
Press **PLAY/PAUSE** to view recorded video. The DVR will either start playing video from the most recent image or from the last recalled image. See the table above for brief descriptions of the playback controls.

Easy Evidence Find

There are many ways to search for video. While in Search mode, press **MENU** to open the Search menu. Pick a search method to find an incident with:

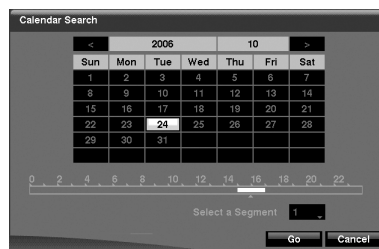
Go to the First	Displays the first recorded image.
Go to the Last	Displays the last recorded image.
Go to the Date/Time...	Searches by date and time.
Calendar Search...	Searches using a calendar.
Event Log Search...	Selects video from the event log.
Text-In Search...	Searches text input strings.
Motion Search...	Searches motion events.
Clip-Copy...	Clips a video segment and saves it.
Print...	Allows you to print a selected image.
Zoom...	Zooms the current playback image.
Slow Play	Plays video at slow speed.
Data Source	Switches from recorded and archived video.
Exit Search	Exits the Search menu.

Date and Time Search



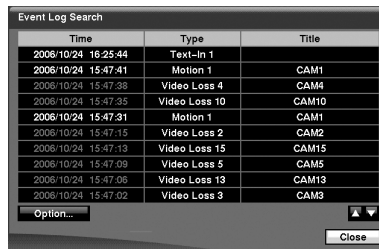
- Move the cursor over the date/time and press **↵**.
- Move Left or Right to highlight the date/time value to change.
- Use the Up and Down buttons to change the date/time value to the date/time that you want to search through.
- Once you have set the date and time you want, press **↵**.
- Highlight **Go** and press **↵**.
- The selected time and date will display. If no video was recorded in that time, a No Video message will appear.
- Use the playback controls to search through the video.

Calendar Search



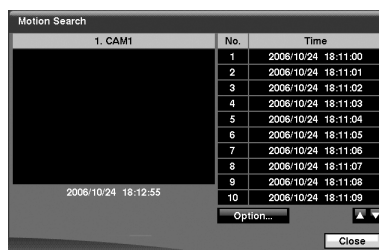
- Days with recorded video display in white.
- Highlight a day with recorded video and press **↵**.
- A time bar displays at the bottom of the calendar. Hours with video recorded are highlighted orange.
- Select the time bar and select the time to search.
- If there is more than one video stream in the same time range, move to **Select a Segment** and select the video stream you want to search.
- Highlight **Go** and press **↵**.
- The selected time and date will display. Use the playback controls to search through the video.

Event Log Search



- The DVR maintains a log of each time an Event occurs. The **Event Log Search** screen displays this list.
- Highlight the event that you want to view.
- Press **↵** to extract the video and display the first image of the event.
- Press **Search** to return to live monitoring.
- You can narrow your event search by selecting **Option...** and setting up a new search condition. See the User Guide for more information.

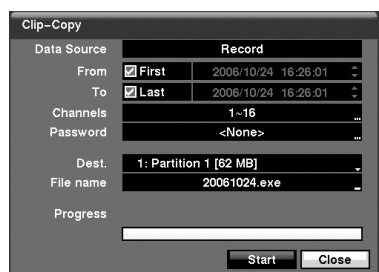
Motion Search



- The Motion Search screen allows you to search for motion activity that occurred within the area of a configurable zone of interest.
- Use the arrow buttons to highlight the event for which you want to view video and press **↵**.
- The first image of the associated event video displays in the small search screen in the left pane of the screen.
- To view and play back the video in full screen, highlight **Close** and press **↵**.
- You can narrow your event search by selecting **Option...** and setting up a new search condition. See the User Guide for more information.

Copy Evidence to a CD

Clip-Copy Screen



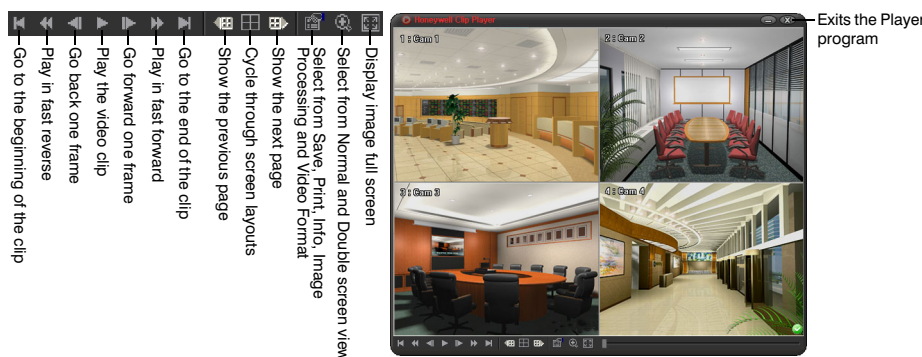
The **Clip-Copy** screen can be used to copy video clips to an internal CD-RW, or external USB drive.

- In Search mode, press and hold **MENU** for 2 seconds to open the Clip-Copy screen.
- The **Data Source** (Record or Archive) is displayed.
- Set the start and stop times and dates.
- Select the cameras to include in your video clip.
- If necessary, enter a password that will have to be entered when reviewing the video clips.
- In the box beside **Dest.**, select the storage device you would like to record the video clip onto.
- Change the default **File name**, if necessary.
- Select **Start** and press **↵**.

Reviewing Video Clips

You do not need to install any special software on your personal computer to review the video clips. The copied video clips contain the Clip Player program.

- If you used a USB storage device, disconnect it from the DVR and connect it to your PC. If you used a recordable CD, insert the CD into your computer's CD drive.
- The Clip Player screen displays the clip images. Use the Clip Player controls to view the video.



Honeywell

www.honeywellvideo.com
+1.800.796.CCTV (North America only)
HVSupport@honeywell.com

© 2007 Honeywell International Inc.
Document 800-00280 – Rev A – 05/07

Specifications subject to change without notice.
Imperial conversions are approximate.