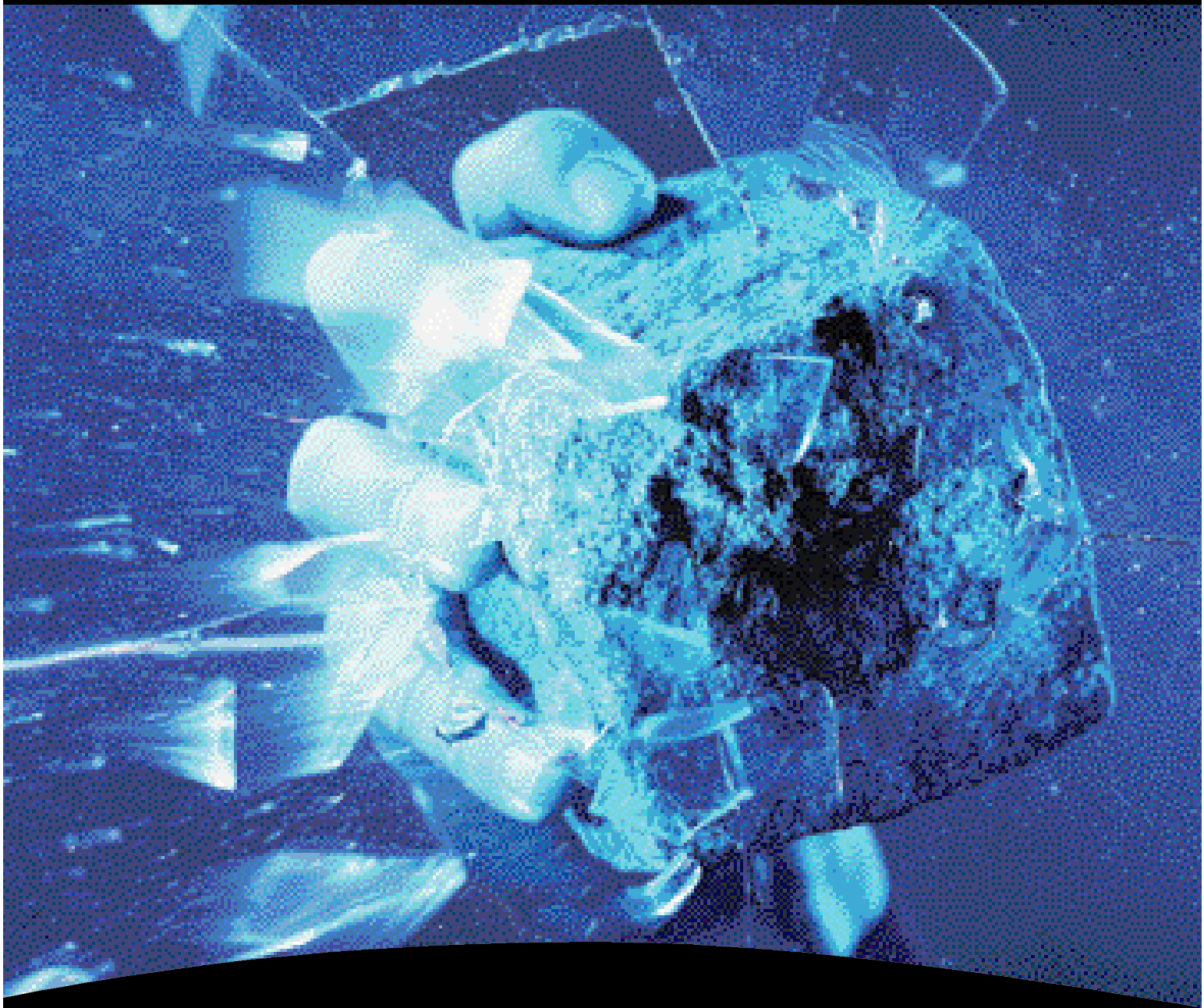


FlexGuard® Glassbreak Detectors



The First Line of Defense

Honeywell

The Ultimate Protection

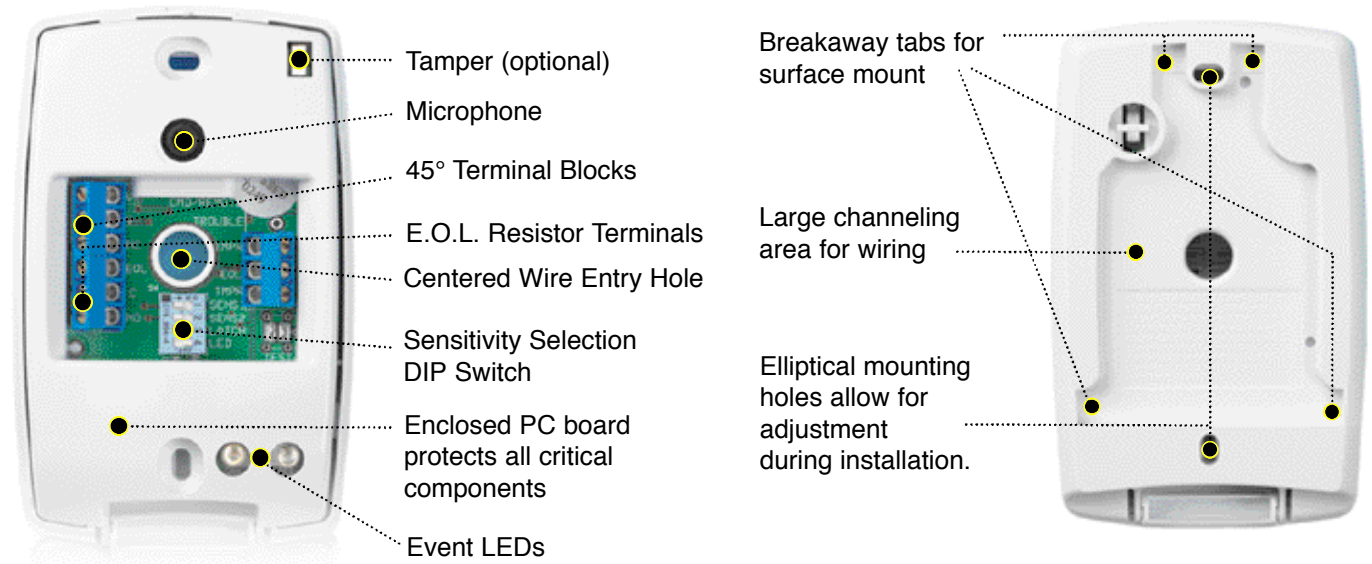


A Legacy of Proven Performance

A blend of head-turning style and sophisticated technology, FlexGuard is the industry's most versatile glassbreak detector—the only one to offer a choice of hardwired, wireless or V-Plex polling loop technology for the ultimate in flexibility. It's no wonder there are millions of FlexGuards protecting homes and businesses worldwide—more than any other glassbreak combined!



Style Meets Technology

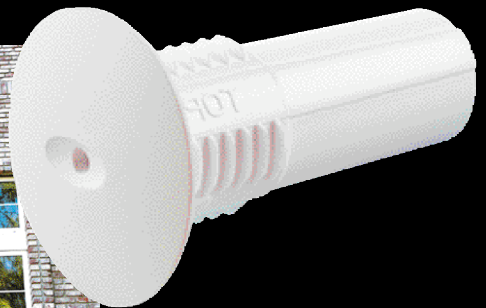


FlexGuard glassbreaks feature a modern, leading-edge design that's simple, uncluttered and blends with any decor. Whether choosing hardwired, wireless or V-Plex polling loop versions, all FlexGuard glassbreaks share the same sleek, sophisticated design. They are ideally suited for use in both residential and light commercial applications.

Installation-Friendly Flush Mount Designs



The generous physical design of the FG-1625F adequately covers the size of any single gangbox.



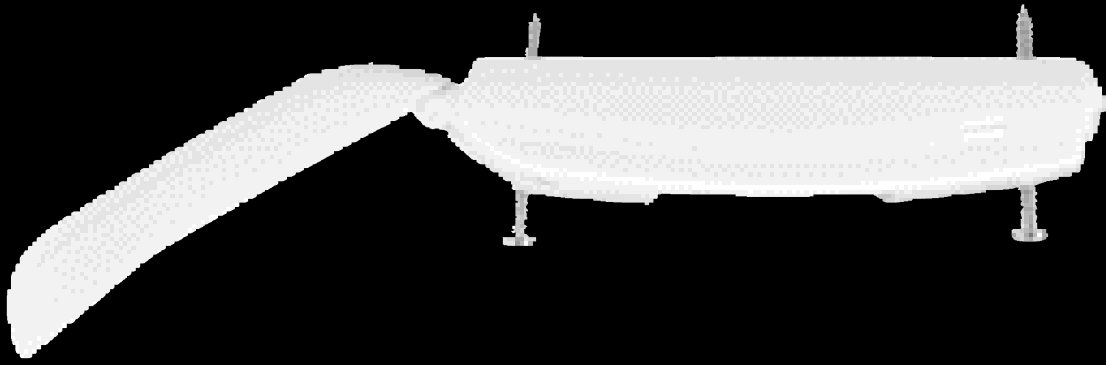
The FG-1625RFM mounts in a one-inch diameter hole in walls or ceilings and is the perfect choice when aesthetics are a concern.

Staggered "T" terminals ensure a secure connection while speeding up installations.



FG-1625RFM Wiring Terminals

Designed with the Installer in Mind



Captive Mounting Holes

Specially engineered mounting holes hold screws in place while mounting the detector, making installation a snap. In addition, our hinged covers are designed to open almost a full 180° for convenient, easy wiring.

Trouble-free Installation

FlexGuard detectors mount virtually anywhere—on walls, window frames or ceilings—and are UL, ULC and CE listed for all glass types, including plate, tempered, laminated, wired, film-coated and sealed insulated. What's more, FlexGuards are rigorously challenged in test rooms built to exceed the toughest SIA standards.



The patented FG-701 Glassbreak Simulator (shown at left) can activate and deactivate the test mode from up to 15 feet away. It is compatible for testing all Honeywell brand glassbreak detectors.

Your Trusted Partner of Choice

Dealers and installers worldwide rely on Honeywell's patented FlexGuard technology for:

- Uncompromising detection
- Trouble-free installation and service
- Increased customer satisfaction and retention

FlexGuard Glassbreak Detectors



FG-1625

- Surface mount design
- No minimum range
- 25' maximum range



FG-1615

- Surface mount design
- No minimum range
- 15' maximum range



FG-1625F

- Flush mount design
- No minimum range
- 25' maximum range



FG-1625R

- Round surface mount design
- No minimum range
- 25' maximum range



FG-1625SN

- V-Plex surface mount design
- No minimum range
- 25' maximum range



FG-1608

- Surface mount design with built-in contact
- No minimum range
- 8' maximum range



5853

- Wireless surface mount design
- No minimum range
- 25' maximum range



FG-1625RFM

- 1.0" round flush mount design
- No minimum range
- 25' maximum range

Find out more

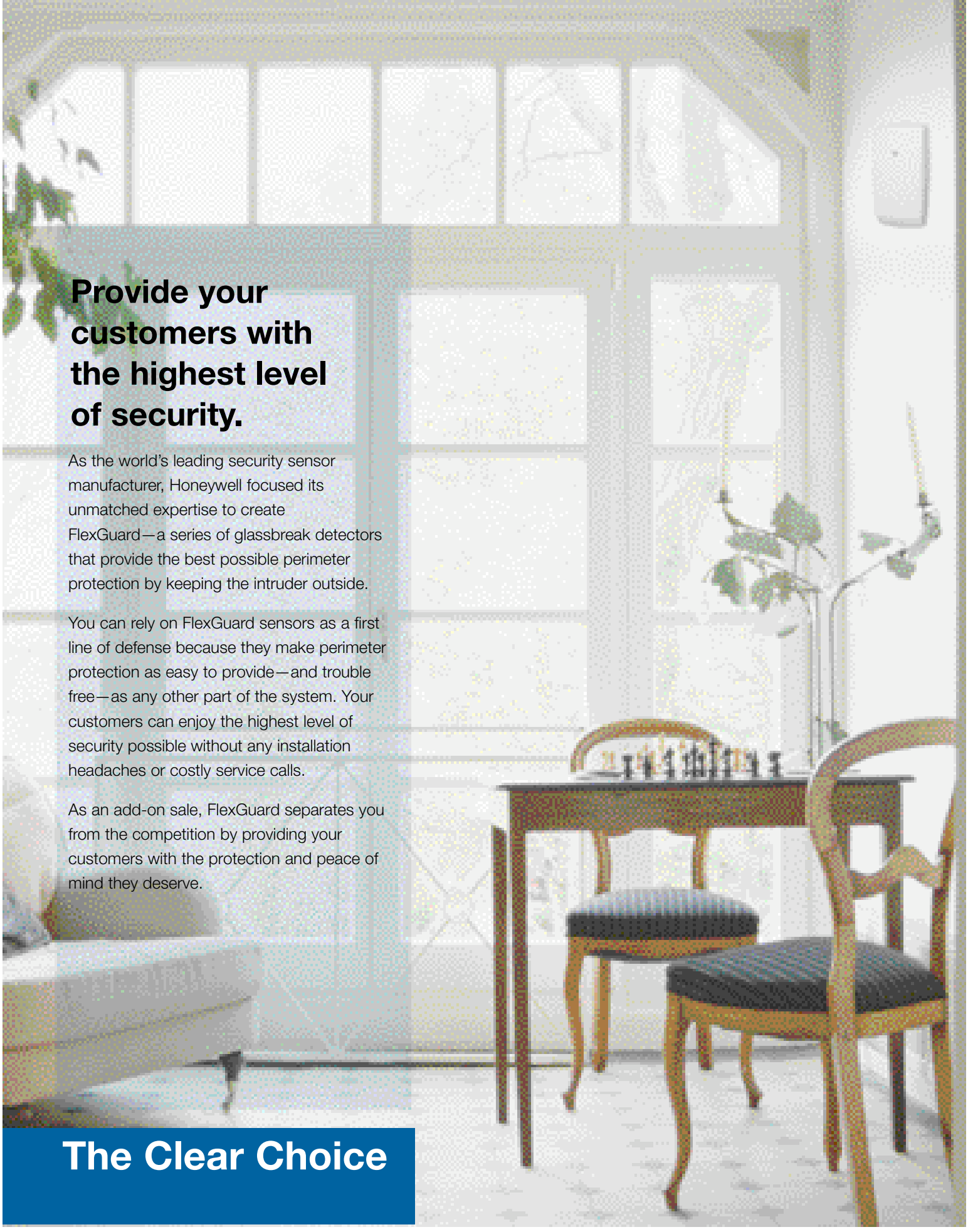
For more information...

Honeywell Security & Custom Electronics

165 Eileen Way
P.O. Box 9035
Syosset, NY 11791
Tel: 800-573-0154
www.honeywell.com

L/FG1600SRS/D
August 2005
©2005 Honeywell International Inc.

Honeywell

A bright, airy room with a large window, a dining table with chairs, and a potted plant. The room is well-lit, suggesting a sunny day. The window has a decorative frame and is divided into several panes. A dining table with two chairs is visible in the foreground. A potted plant is on the table. The overall atmosphere is clean and modern.

Provide your customers with the highest level of security.

As the world's leading security sensor manufacturer, Honeywell focused its unmatched expertise to create FlexGuard—a series of glassbreak detectors that provide the best possible perimeter protection by keeping the intruder outside.

You can rely on FlexGuard sensors as a first line of defense because they make perimeter protection as easy to provide—and trouble free—as any other part of the system. Your customers can enjoy the highest level of security possible without any installation headaches or costly service calls.

As an add-on sale, FlexGuard separates you from the competition by providing your customers with the protection and peace of mind they deserve.

The Clear Choice