

USER GUIDE

GENERAL INFORMATION

The 5805-6 is a compact, 6-button portable wireless transmitter that permits an alarm system to be controlled remotely. The transmitter is typically used for arming, disarming, panic and output relay operation. Check with your installer for operation of the buttons on your unit.

OPERATING THE BUTTONS

To activate a programmed function, press and hold the associated button(s) down. The LED will flash green to indicate the unit has transmitted in Standard mode, or red to indicate it has transmitted in High-Security mode.



In order to minimize the possibility of accidental transmissions, the buttons on the 5805-6 must be pressed and held for at least 1/2 second to activate the transmitter.

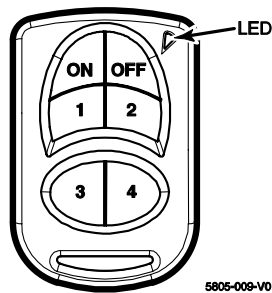


Figure 1 - 5805-6 Transmitter

Table 1 - Transmitter Functions
(Complete this table with your installer)

Button	Function
ON	
OFF	
1	
2	
3	
4	
ON + 4	
3 + 4	

LOW BATTERY INDICATION

When a Button is pressed and a Low Battery condition exists, a message is transmitted to the control panel and LOW BAT will be displayed on the keypad. The LED will not flash during transmission if the battery is low.

REPLACING THE BATTERY

Removing the battery

1. Remove the case back by using the blade of a small screwdriver to pry it open.
2. Insert the blade of a small screwdriver as shown in Figure 2.
3. Twist the screwdriver to release the battery.
4. Carefully remove the battery.

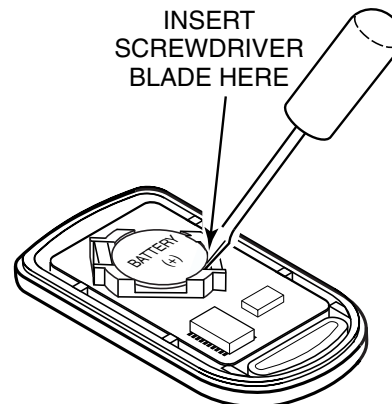


Figure 2 - Removing the Battery



Do not remove the printed circuit board.

(Continued on reverse)

Installing a new battery



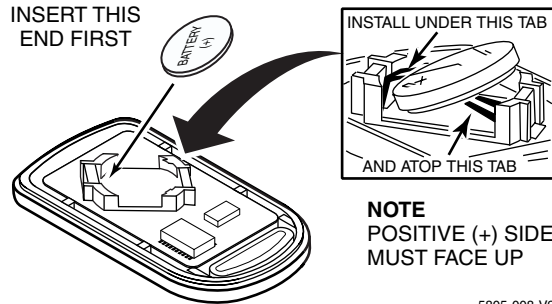
Before installing a new battery, Press and hold any button for at least two seconds

1. Insert a new battery in case back location as shown in Figure 3. **Positive (+) end must face up.** Use Panasonic CR2032, Maxell CR2032, Duracell DL 20325, or Varta CR2032 lithium battery only.



Improper installation will result in damage to the battery.

2. Close the case by snapping case front and back together.
3. Press any button and verify that the LED flashes.



5805-008-V2

Figure 3 - Installing the Battery

LIMITATIONS STATEMENT

Signals sent by wireless transmitters may be blocked or reflected by metal objects before they reach the alarm receiver. Even if the signal path has been recently checked during a weekly test, blockage can occur if a metal object somehow blocks the signal path.

Wireless button type transmitters that have visual and audible indications of status must be used to confirm that the desired action (such as arming) has occurred after pressing a function button on any of these transmitters. Be sure to listen for appropriate audible and visual indications that such action has occurred. Otherwise, you could inadvertently leave yourself or your premises unprotected.

External factors such as humidity, high or low temperatures, or constant activation of a programmed button may reduce battery life in a given installation. If the button unit is used infrequently, activate it regularly (once per week) to confirm operation. A button type transmitter will report a low battery condition to the alarm control when a low battery status is detected.

FOR WARRANTY INFORMATION AND FOR DETAILS REGARDING THE LIMITATIONS OF THE ENTIRE ALARM SYSTEM, REFER TO THE INSTALLATION INSTRUCTIONS FOR THE RECEIVER/CONTROL WITH WHICH THIS DEVICE IS USED.

FCC AND INDUSTRY CANADA STATEMENT

THIS DEVICE COMPLIES WITH PART 15 OF FCC RULES and RSS210 OF INDUSTRY CANADA. OPERATION IS SUBJECT TO THE FOLLOWING TWO CONDITIONS: (1) THIS DEVICE MAY NOT CAUSE HARMFUL INTERFERENCE, AND (2) THIS DEVICE MUST ACCEPT ANY INTERFERENCE RECEIVED, INCLUDING INTERFERENCE THAT MAY CAUSE UNDESIRABLE OPERATION.

Honeywell

165 Eileen Way, Syosset, New York 11791

Copyright © 2006 Honeywell International Inc.

www.honeywell.com/security



K5761V2 7/06 Rev. A